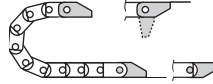




**Polymer, one-piece**

- One-piece mounting bracket
- Corrosion-resistant
- Available preassembled
- Inner and outer attachment possible
- Available with or without strain relief tiwrap plates

Moving end with bore  
(outer link) 060...1 (PZ)



060...2 (PZ) Fixed end  
with pin (inner link)

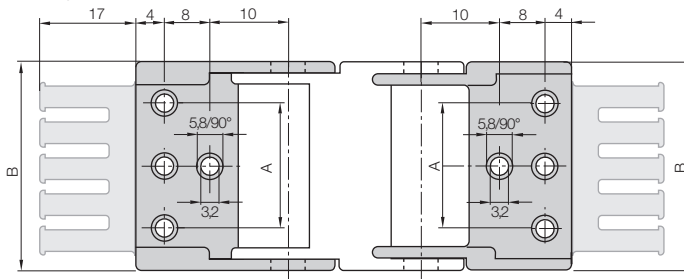
Possible installation conditions for assembled mounting brackets ▶ Order example "preassembled" below

060...1 (PZ)

Moving end

060...2 (PZ)

Fixed end



060.06.12 - 060.20.12: center bores only  
060.30.12 - 060.64.12: outer bores only

For E-Chain*	Part No. full set with tiwrap plate	Part No. full set without tiwrap plate	Number of teeth	Dim. A [mm]	Dim. B [mm]
06.06. ▶	060.06.12 PZ	060.06.12	1	-	12,5
06.10. ▶	060.10.12 PZ	060.10.12	1	-	16,5
06.16. ▶	060.16.12 PZ	060.16.12	2	-	22,5
06.20. ▶	060.20.12 PZ	060.20.12	2	-	27,0
06.30. ▶	060.30.12 PZ	060.30.12	3	22	37,0
06.40. ▶	060.40.12 PZ	060.40.12	4	32	47,0
06.50. ▶	060.50.12 PZ	060.50.12	5	42	57,0
06.64. ▶	060.64.12 PZ	060.64.12	6	56	71,0

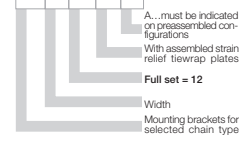
For the preassembled mode please add the index [A1]...[A4] e.g. 060.20.12 PZ [A1]

**Dimensions and order configurations**

Strain relief is possible on the moving end and/or the fixed end.

**Part No. structure**

060.20.12 PZ A1



**Full set, for both ends:**

060.20.12 PZ + tiwrap plate

**Single-part order:**

060.20.1 PZ + tiwrap plate

Mounting bracket with bore

060.20.2 PZ + tiwrap plate

Mounting bracket with pin



**Quicksnap** - the complete, detachable mounting unit, upon request

Part No. 060.10.QS, Art. Nr. 060.16.QS,

Part No. 060.20.QS, Art. Nr. 060.40.QS



**Quickfix** - mounting bracket with dowel, upon request

**Additional Features**



▶ page 5.9

3D-CAD files, pdf-downloads and many online features ▶ [www.igus.de/en/06](http://www.igus.de/en/06)